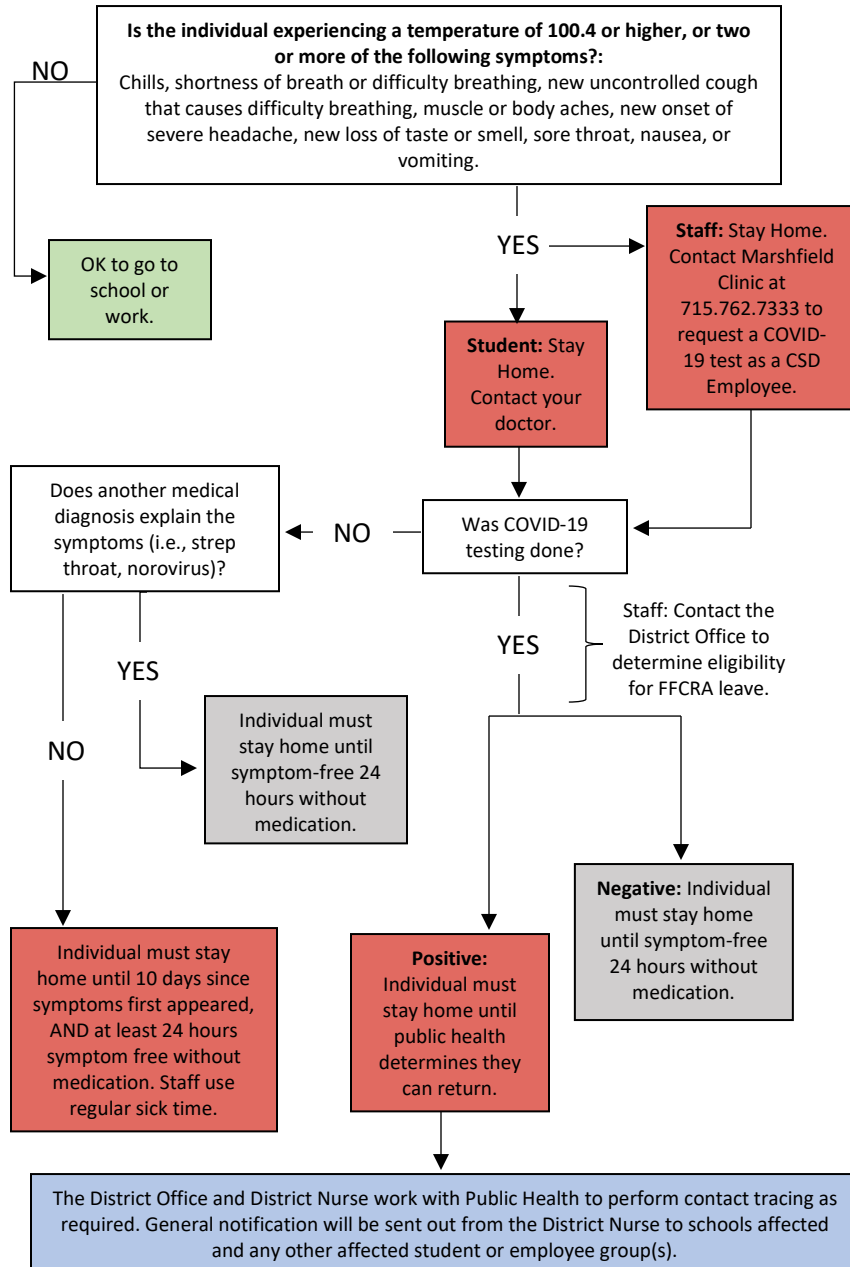




CHEQUAMEGON SCHOOL DISTRICT RESPONSE TO COVID-19 SIGNS, SYMPTOMS, AND EXPOSURE

*Note: Not every possible scenario is captured by this flowchart. Staff must contact the District Office any time they have symptoms or possible exposure. Questions from families should be directed to our District Nurse.

STUDENT OR STAFF SYMPTOMS



STUDENT OR STAFF WITH SUSPECTED OR UNKNOWN EXPOSURE

